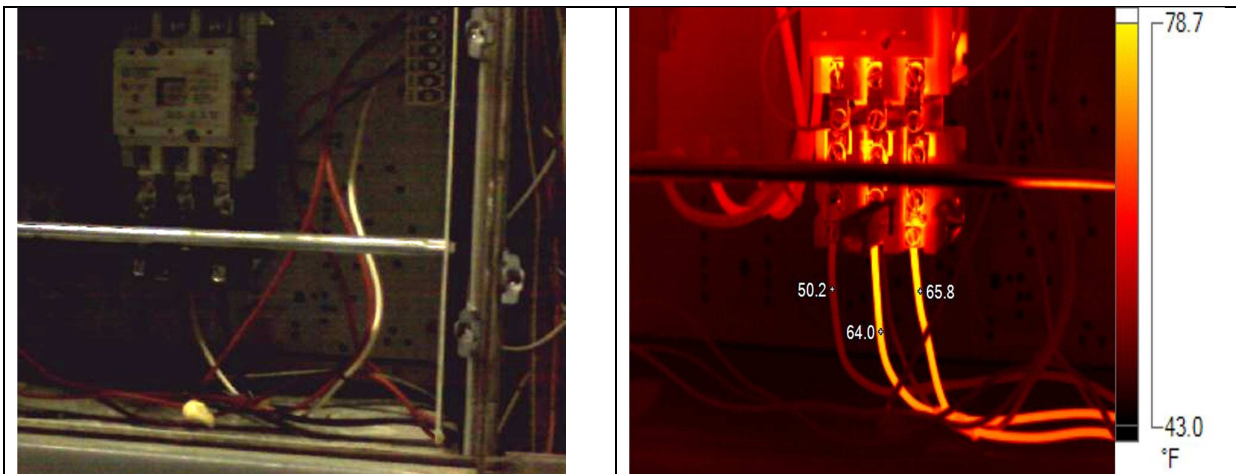


## Thermal Imaging.Consulting.Repairs

Save money in the New Year!

Catch minor problems before they become costly repairs with production downtime!



These pictures are from an actual client. To the naked eye the source of equipment malfunction at a car wash is not clear. Consequently, this client was instructed by a former contractor that he needed to purchase a new motor for \$800.

Instead, this problem was easily identified with thermal imaging to be faulty contacts in the motor starter resulting in no current in phase A (left side). The client merely required an \$85 motor starter rebuild kit to correct the malfunction saving him hundreds of dollars on new equipment.

### **Common troubleshooting uses include:**

**Switch Gear:** service panels, breakers, disconnect switches, faulty fuses, high resistance connections on terminal lugs, bus duct and many other uses

**Motors:** motor starters, motor bearings, motor couplers, motor lubrication problems, overheating due to poor motor alignment, internal motor issues, pulley and belt problems

**Misc Uses:** transformers, faulty valves, tank levels, conveyor belt systems, floor heating problems

**The goal of thermal imaging services is to avoid production downtime and be able to detect a problem before it becomes a catastrophe with increased equipment damage. Thermal imaging allows you to find potential problems early, order necessary parts and schedule equipment repairs at your convenience vs a sudden malfunction causing costly loss of production.**

Contact Jeff at [Jeff@aactelectric.com](mailto:Jeff@aactelectric.com) for a consultation, or call cell at (630) 878-0028.